

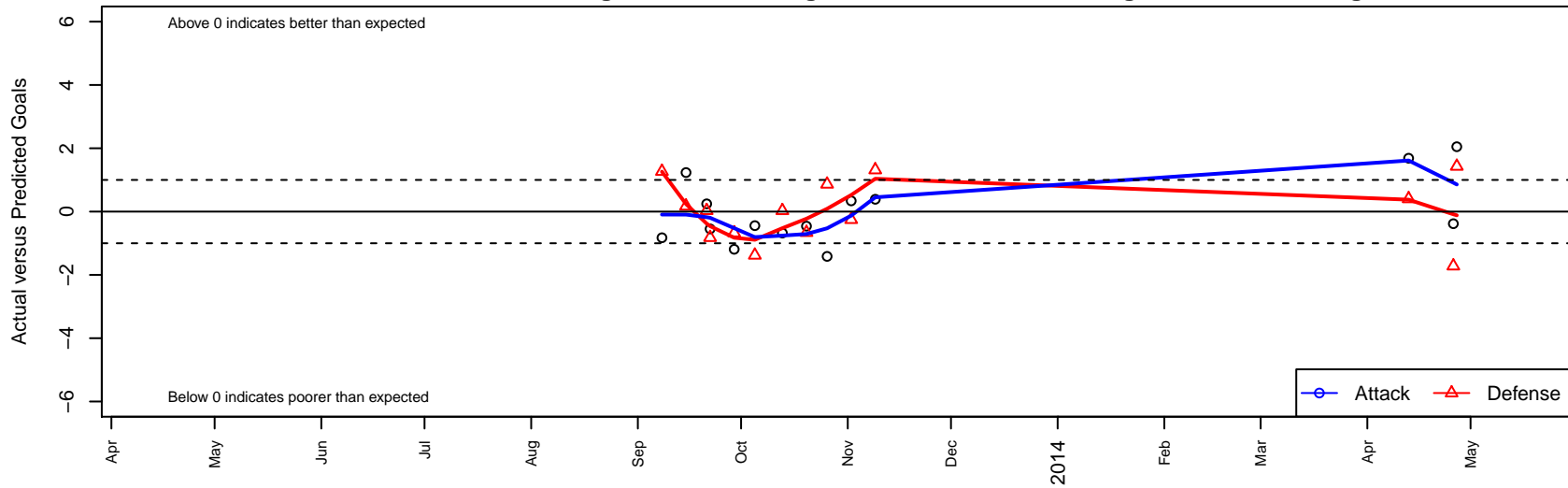
CA Premier Capo FC Blue B98

, CAS
 B98 total strength=1697
 attack=31.66 defense=15.79
 fall league = CSL Premier U15
 alt names used:
 CA PREMIER CAPO FC BLUE
 Capo FC B98 Blue

Venues played:
 CSL Premier U15
 SoCal National Cup B98



CA Premier Capo FC Blue B98
 Dots are actual minus expected GF (blue circles) and GA (red triangles).
 Blue line is smoothed change in attack strength. Red is smoothed change in defense strength.



	date	home		away		venue	pred.home	pred.away
26998	2014-04-27	CA Premier Capo FC Blue B98	5	Santa Barbara SC White B98	0	SoCal National Cup B98	2.95	1.43
26860	2014-04-26	TVSA Hawks Academy B98	3	CA Premier Capo FC Blue B98	1	SoCal National Cup B98	1.28	1.38
26416	2014-04-13	CA Premier Capo FC Blue B98	5	Simi Valley Eclipse B98	2	SoCal National Cup B98	3.31	2.40
17896	2013-11-09	BYSC Corona United B98	1	CA Premier Capo FC Blue B98	2	CSL Premier U15	2.32	1.61
16989	2013-11-02	CA Premier Capo FC Blue B98	2	Tustin United Red B98	1	CSL Premier U15	1.66	0.75
16086	2013-10-26	CUSC Blue B98	1	CA Premier Capo FC Blue B98	0	CSL Premier U15	1.86	1.42
15416	2013-10-20	CA Premier Capo FC Blue B98	2	Fullerton Rangers White B98	2	CSL Premier U15	2.46	1.34
14474	2013-10-13	CA Premier Capo FC Blue B98	0	DMS11 Academy Gold B98	3	CSL Premier U15	0.68	3.03
13102	2013-10-05	CA Premier Capo FC Blue B98	0	FC Golden State Academy B98	4	CSL Premier U15	0.44	2.62
12401	2013-09-29	Albion SC White B98	2	CA Premier Capo FC Blue B98	0	CSL Premier U15	1.33	1.19
11511	2013-09-22	CA Premier Capo FC Blue B98	1	Oxnard AC Blue B98	2	CSL Premier U15	1.55	1.18
11208	2013-09-21	CFC Untouchables Black B98	2	CA Premier Capo FC Blue B98	2	CSL Premier U15	2.03	1.75
10535	2013-09-15	CA Premier Capo FC Blue B98	3	Freedom FC B98	1	CSL Premier U15	1.77	1.17
9577	2013-09-08	Oceanside Breakers Black B98	0	CA Premier Capo FC Blue B98	0	CSL Premier U15	1.27	0.83